



Military Road | Brighstone | Newport | PO30 4EY

Offers In The Region Of £260,000



Military Road | Brighstone
Newport | PO30 4EY
Offers In The Region Of

This is a beautifully presented 2 bedroom terraced cottage situated in the tranquil setting of rural Brighstone offers a relaxing coastal retreat. The property has a linked living and dining area, kitchen and bathroom on the ground floor. Upstairs there is 2 double bedrooms, both have wonderful sea views and bedroom 1 benefits from a private balcony. Outside is a private enclosed courtyard and large communal green space as well as off-road parking. The property is surrounded by countryside and views of the sea. It's also just a short walk to Brighstone village, Brighstone beach and a short drive to Compton Bay.

- SEA VIEWS
- SURROUNDING COUNTRYSIDE
- 2 BEDROOMS
- OFF ROAD PARKING
- ELECTRIC HEATING

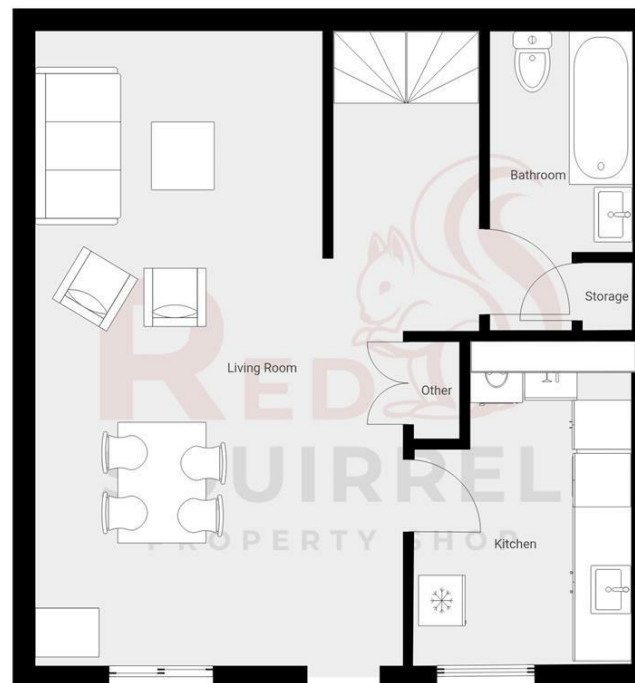
Living Room/Diner
15'12" x 22'10" (4.87 x 6.97)

Kitchen
7'10" x 8'5" (2.4 x 2.57)

Bedroom One
15'1" x 13'1" (4.6 x 4.0)

Bedroom Two
14'11" x 7'11" (4.54 x 2.41)

Bathroom
5'2" x 10'9" (1.57 x 3.28)



Energy Efficiency Rating		Current	Potential
Very energy efficient - lower running costs			
(92 plus) A			86
(81-91) B			
(69-80) C			
(55-68) D		59	
(39-54) E			
(21-38) F			
(1-20) G			
Not energy efficient - higher running costs			
England & Wales		EU Directive 2002/91/EC	

Council Tax Band B
EPC Rating D

3 Langely Court Pyle Street
Newport
Isle of Wight
PO30 1LA
01983 521212

enquiries@redsquirrelpropertyshop.co.uk
www.redsquirrelpropertyshop.co.uk

THIS FLOOR PLAN IS PROVIDED WITHOUT WARRANTY OF ANY KIND. SENSOPA DISCLAIMS ANY WARRANTY INCLUDING, WITHOUT LIMITATION, SATISFACTORY QUALITY AND ACCURACY OF DIMENSIONS.